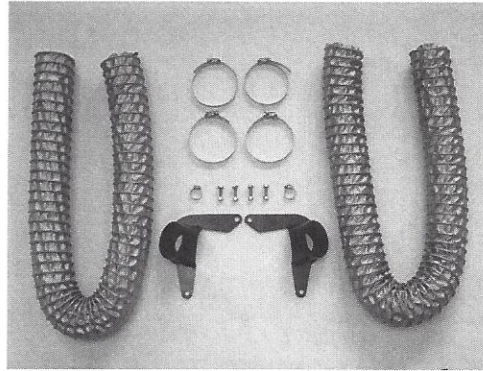


04802.3KR
1994-2004 Mustang
Race Brake Cooling Duct Kit

**Parts List**

1. 1 – Right-hand Aluminum Duct
2. 1 – Left-hand Aluminum Duct
3. 2 – 50" Sections of 3" Flexible Hose
4. 2 – 2-9/16" to 3-1/2" Stainless Hose Clamps
5. 2 – 7/8" Stainless Hose Clamps
6. 4 – 1/4-20 Hex-nuts
7. 4 – 1/4" Washers
8. 4 – 1/4" Lock Washers
9. 2 – 17" Heavy Duty Cable Ties
10. 2 – Cable Ties 11"
11. 4 – Cable Ties 5"
12. 2 – Cable Ties 14"

Aluminum Duct Installation Procedure

1. Break loose the front wheel lug nuts.
2. Raise and safely support front of vehicle.
3. Remove the front wheels.
4. Remove the front calipers and rotors.
5. Suspend the calipers on a wire to prevent damage to the brake hose.
6. Remove the dust shields. (Note: it is necessary to drill out the factory rivets in order to easily remove the dust shields)
7. Attach the cooling ducts to the spindles, with the 1" hex bolts, nuts and washers, (items #6, 8, 9 and 10) using the dust shield mounting holes.
8. Reinstall the rotors and calipers.

Flexible Hose Installation Procedure

Hint: make sure the vehicle is supported under the lower control arms so that the front suspension does not sag.

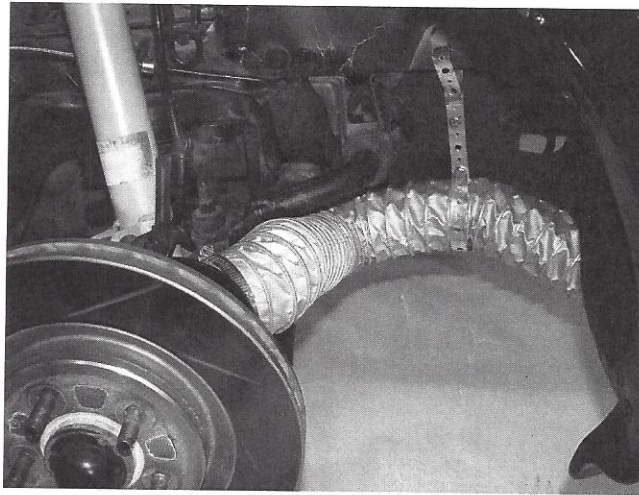
1. When working on the passenger side, turn the steering wheel to full lock in that direction.
2. Attach one end of the flexible hose to the cooling duct using the 1-5/8" – 2-1/4" hose clamp.
3. Use the provided cable ties to attach the hose to the steering rack. You will utilize three per side. First attach one loosely to the rack (5"), just outboard of the dust boot, next attach one loosely to the flex hose (11"). Then use the third to tie the two together tightly (5"). Now snug the first two as much as possible. (*Note: do not over tighten the cable tie on the flex hose*) Trim ties as needed when finished. Attach the small hose clamp to the steering rack just outboard of the cable tie. It will serve as a stop in case the tie should start to slide on the rack. When finished make sure there is enough slack in the hose to compensate for steering/suspension travel. Check this by having a helper in the car turn the steering wheel lock to lock and observe the hose.

Note: If the hose is drawn too taught during steering travel it may tear.

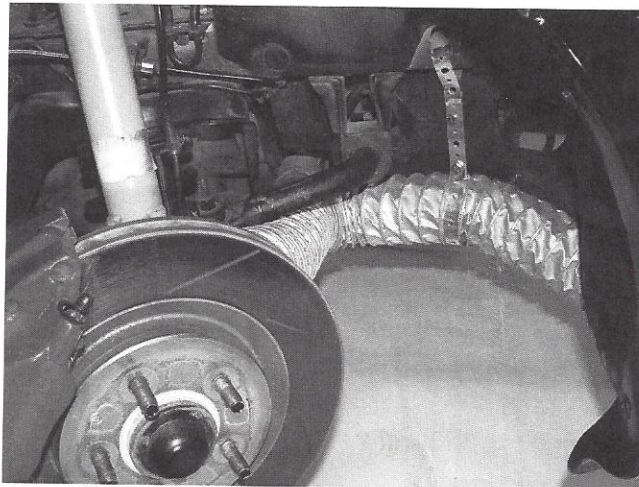
Note: If the hose is too loose it may sag and could get damaged by suspension components.

4. Use the 17" Cable Ties to hang the remaining hose from a hole in the unibody as pictured (*see pictures next page*).
5. Attach the other end of the hose to the opening just inboard of the fog light.
6. Repeat the process for the other side.
7. Install the wheels and check all clearances again, turning the wheel lock to lock.
8. Lower the car and torque the lug nuts to the manufacturer's specifications.
9. Drive the car to check fit and function.

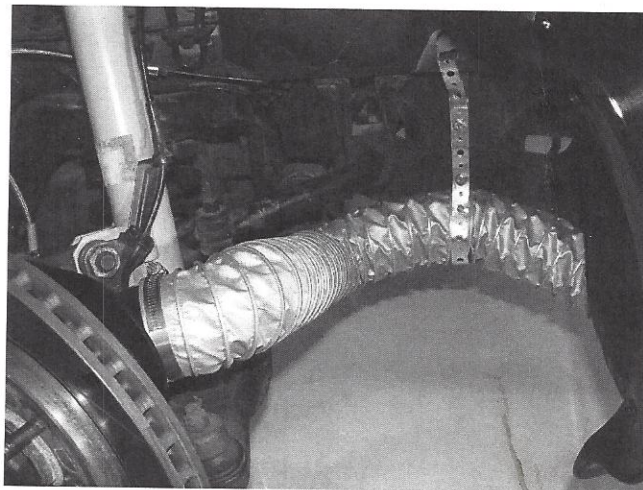
Note: If the hose shows signs of excessive rubbing or wear, adjust as required.



Passenger Side Hose Routing – Steering Wheel Centered



Passenger Side Hose Routing – Steering Wheel Full Lock Left



Passenger Side Hose Routing – Steering Wheel Full Lock Right